



## Santa Cruz Post Office – Drain Line Restoration

The Santa Cruz Main Post Office built in 1906 and noted for its architectural significance was placed on the National Historic Register in 1985. The National Register of Historic Places is the Nation's official list of cultural resources worthy of preservation.

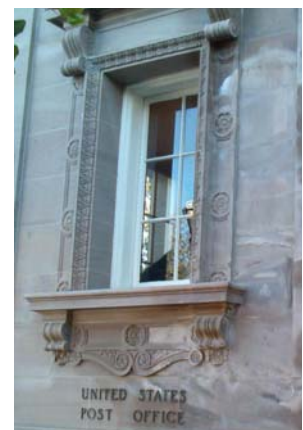
### The Problem:

The challenge facing the National Park Service, who administer the well being of the historic Santa Cruz Post Office, was a failing main roof drain line and how to fix it without destroying the architectural importance of this historical building. The challenges of the job involved restoring a drain system that had bends and multiple 90 degree elbows. An attempt using inversion lining techniques by a company that specializes in inversion lining had failed. During the attempted installation, the inversion liner split at the seams and could not be navigated through the elbows.



### The Solution:

ACE DuraFlo® – eLiner®. The National Park Service, still determined to find a fix to the main roof drain line, had heard about the ACE DuraFlo® drain lining system and placed a call to ACE DuraFlo's Bay Area Pipe Restoration in San Francisco. Unlike inversion lining systems, the ACE DuraFlo® drain lining system is capable of being installed in drain systems with elbows and bends. In what became a full-day job, ACE DuraFlo® successfully restored the main roof drain line of this historically significant building.



### ACE DuraFlo – The Repiping Alternative

California (800)359-6369 • Pacific Northwest (888)551-0220 • East Coast (888)741-0220

All other inquires for U.S. & Canada (888)741-0220

[www.AceEnviroTech.com](http://www.AceEnviroTech.com)

